



**TRANSPORTATION CABINET**

Frankfort, Kentucky 40622  
www.transportation.ky.gov/

**Steven L. Beshear**  
Governor

**Michael W. Hancock, P.E.**  
Secretary

December 10, 2012

CALL NO. 114  
CONTRACT ID NO. 121356  
ADDENDUM # 2

Subject: Lawrence County, STPR 5255 (019)  
Letting December 14, 2012

- (1) Revised - Plan Sheets - R2d, R31, & S1
- (2) Revised - Bid Items - Pages 108-111 of 111

Proposal revisions are available at <http://transportation.ky.gov/Construction-Procurement/>.

Plan revisions are available at <http://www.lynnimaging.com/kytransportation/>.

If you have any questions, please contact us at 502-564-3500.

Sincerely,

A handwritten signature in blue ink that reads "Ryan Griffith".

Ryan Griffith  
Director  
Division of Construction Procurement

RG:ks  
Enclosures



An Equal Opportunity Employer M/F/D

# GENERAL SUMMARY

COUNTY OF	ITEM NO.	SHEET NO.
LAWRENCE	12-284.00	R2D

1 **REVISED 12-10-2012**

PREPARED BY \_\_\_\_\_ DATE \_\_\_\_\_  
 CHECKED BY \_\_\_\_\_ DATE \_\_\_\_\_  
 APPROVED BY \_\_\_\_\_ DATE \_\_\_\_\_

ITEM	DESCRIPTION	UNIT	MAINLINE	APPROXIMATE QUANTITIES												PROJECT TOTALS	
				APPR. RT. 36+00.00	APPR. RT. 64+17.19 (LY LANE)	APPR. RT. 73+75.00 (KY 32)	APPR. RT. 103+00.00 (KY 32)	APPR. RT. 128+77.55 (SUNSET ACRES DR.)	APPR. LT. 147+00.00 (PEARL LANE)	APPR. RT. 165+11.65 (FINE RIDGE RD.)	APPR. LT. 171+25.00 (SHADY LANE)	APPR. RT. 184+65.00 (KY 32)	APPR. LT. 195+72.61 (S. FORKS TWO MILE CREEK RD.)	APPR. LT. 228+52.56 (KY32 TO US23 RAMP)	DETOUR (KY 3395)		
78	CRUSHED AGGREGATE SIZE NO. 2	TON	22														22
1000	4" PERFORATED PIPE	LF	1,403														1,403
1010	4" NON-PERFORATED PIPE	LF	312														312
1020	4" PERFORATED PIPE HEADWALL TYPE 1	EACH	10														10
1028	4" PERFORATED PIPE HEADWALL TYPE 3	EACH	11														11
1032	4" PERFORATED PIPE HEADWALL TYPE 4	EACH	1														1
1310	REMOVE PIPE	LF	207						32						27		266
2091	REMOVE PAVEMENT	SQ YD	6,701					78	75				191		1053		8,098
2159	TEMPORARY DITCH	LF	21,515	197	223	307	244	270	236	174	74	128	790	1770	1551		27,479
2200	ROADWAY EXCAVATION ③ ⑤	CU YD	1,025,131	8,720	2,156	22	2,398	2,975	140	1,743	84	223	5,296	3,398	12,062		1,064,348
2242	WATER ①	M GAL	849.84	8	10.42	11.62	9.23	10.67	9.37	22.77	3.25	5.28	18.85	42.4	54.63		1,056.33
2351	GUARDRAIL - STEEL "W" BEAM SINGLE FACE	LF	7,762.5	75			162.5						162.5	975	337.5		9,475
2360	GUARDRAIL TERMINAL SECTION NO. 1 ⑥	EACH	23	2									1		2		36
2373	GUARDRAIL END TREATMENT TYPE 3	EACH	2														2
2391	GUARDRAIL END TREATMENT TYPE 4A	EACH	7										1	4	2		14
2429	RIGHT OF WAY MONUMENT TYPE 1	EACH	208		6			5	2	3			10	7	24		265
2432	WITNESS POST	EACH	208		6			5	2	3			10	7	24		265
2484	CHANNEL LINING CLASS III	TON	7,372						21				32	96	152	192	7,673
2545	CLEARING AND GRUBBING ②	LS															1
2568	MOBILIZATION	LS															1
2569	DEMobilIZATION	LS															1
2585	EDGE KEY	LF	68.02		15.00		21.13	9.40	11.20	14.48	9.50	20.00	20.00		85.21		273.94
2650	MAINTAIN AND CONTROL TRAFFIC	LS															1
2651	DIVERSIONS (BY-PASS DETOURS)	LS															1
2671	PORTABLE CHANGEABLE MESSAGE SIGN-PORT 3 LINE	EACH															2
2701	TEMPORARY SILT FENCE	LF	21,515	197	223	307	244	270	236	174	74	128	790	1,770	1,442		27,370
2703	SILT TRAP TYPE A	EACH	183														183
2704	SILT TRAP TYPE B	EACH	264														264
2705	SILT TRAP TYPE C	EACH	61														61
2706	CLEAN SILT TRAP TYPE A	EACH	550														550
2707	CLEAN SILT TRAP TYPE B	EACH	792														792
2708	CLEAN SILT TRAP TYPE C	EACH	183														183
2709	CLEAN TEMPORARY SILT FENCE	LF	21,515	197	223	307	244	270	236	174	74	128	790	1,770	1,442		27,370
2726	STAKING	LS															1
2775	FLASHING ARROW	EACH	2														2
5990	SODDING	SQ YD	1,272				29						76				1,377
5952	TEMPORARY MULCH	SQ YD	432,212														432,212
5953	TEMPORARY SEEDING AND PROTECTION	SQ YD	43,221														43,221
5966	TOP DRESSING FERTILIZER	TON	23														23
5985	SEEDING AND PROTECTION	SQ YD	432,212														432,212
6510	PAVEMENT STRIPING - TEMPORARY PAINT - 4 IN	LF	39,640														39,640
6514	PAVEMENT STRIPING - PERMANENT PAINT - 4 IN	LF	65,331	591	669	921	732	810	708	522	222	384	2,371	2,840	4,326		80,426
6568	PAVEMENT MARKING - THERMOPLASTIC STOP BAR - 24 IN	LF	24	9	9	10	10	9	9	10	9	10	10	24			143
6570	PAVEMENT MARKING - PAINT CROSS HATCH	SQ FT	18,042														18,042
6574	PAVEMENT MARKING - THERMOPLASTIC CURVE ARROW	EACH	9														9
6576	PAVEMENT MARKING - THERMOPLASTIC "ONLY"	EACH	7														7
6589	PAVEMENT MARKER TYPE V - MW	EACH	23												8		31
6591	PAVEMENT MARKER TYPE V - BY	EACH	565												14		579
1982	DELINEATOR FOR GUARDRAIL - WHITE	EACH	83				4						4	19	3		113
22680EN	QWICK CURB	LF													819		819
2600	FABRIC-GEOTEXTILE TYPE IV FOR PIPES ④	SQ YD	4,492	80	50	157		67		67	349	74	302	275	103		6,016
10020NS	FUEL ADJUSTMENT	DOLL															151,027
10030NS	ASPHALT ADJUSTMENT	DOLL															85,414
21373ND	REMOVE SIGN (BILLBOARD)	EACH													1		1
23277ENIIF	TURF MAT TYPE 4	SQ YD	438											193			631
2262	FENCE - WOVEN WIRE TYPE I	LF	435														435
1789	RECONSTRUCT MANHOLE	EACH	1														1
2397	TEMPORARY GUARDRAIL	LF															3,000
2371	GUARDRAIL END TREATMENT TYPE 7 ⑦	EACH															6
2223	GRANULAR EMBANKMENT ⑧	CU YD															70,000
2598	FABRIC-GEOTEXTILE TYPE III ⑨	SQ YD															105,000

- NOTES:**
- ① FOR CONTROLLING DUST CAUSED BY MAINTAINING TRAFFIC ONLY.
  - ② APPROXIMATELY 89.3 ACRES
  - ③ INCLUDES 504 CU. YDS. FROM PIPE SUMMARY
  - ④ FOR WRAPPING PIPE TRENCH BACK FILL
  - ⑤ INCLUDES 19,622 CU. YDS. FOR EMBANKMENT BENCHING
  - ⑥ INCLUDES 8 TERMINAL SECTION NO. 1 FOR TEMPORARY GUARDRAIL
  - ⑦ FOR TEMPORARY GUARDRAIL
  - ⑧ APPROXIMATELY 70,000 CU. YD. OF UNDERCUT EXCAVATION AND 105,000 SQ. YD. OF TYPE III GEOTEXTILE FABRIC AS PER GEOTECHNICAL NOTES 11 AND 13

EARTHWORK SUMMARY	
EXCAVATION	
EXC.	525,698
ROCK EXC.	443,300
DITCH EXC.	58,954
EMB. FOUNDATION BENCHES	19,673
TRANSVERSE BENCHES	16,219
FROM PIPE SUMMARY	504
<b>TOTAL EXCAVATION</b>	<b>1,064,348</b>
EMBANKMENT	
EMB.	243,611
EMB. FOUNDATION BENCHES	19,673
TRANSVERSE BENCHES	16,219
<b>TOTAL EMBANKMENT</b>	<b>279,503</b>

USER: \$\$\$USER\$\$\$  
 DATE: \$\$\$DATE\$\$\$  
 FILE NAME: \$\$\$designsfiles\$specifications\$\$\$  
 E-SHEET NAME: R00200SU.DGN

## GENERAL SUMMARY

COUNTY OF	ITEM NO.	SHEET NO.
LAWRENCE	12-284.00	R2D

PREPARED BY \_\_\_\_\_ DATE \_\_\_\_\_  
 CHECKED BY \_\_\_\_\_ DATE \_\_\_\_\_  
 APPROVED BY \_\_\_\_\_ DATE \_\_\_\_\_

ITEM	DESCRIPTION	UNIT	MAINLINE	APPR. RT. 36+00.00	APPR. RT. 64+17.19 (LY LANE)	APPR. RT. 73+75.00 (KY 32)	APPR. RT. 103+00.00 (KY 32)	APPR. RT. 128+77.55 (SUNSET ACRES DR.)	APPR. LT. 147+00.00 (PEARL LANE)	APPR. RT. 165+11.65 (FINE RIDGE RD.)	APPR. LT. 171+25.00 (SHADY LANE)	APPR. RT. 184+65.00 (KY 32)	APPR. LT. 195+72.61 (S FORKS TWO MILE CREEK RD.)	APPR. LT. 228+52.56 (KY32 TO US23 RAMP)	DETOUR (KY 3395)	PROJECT TOTALS
78	CRUSHED AGGREGATE SIZE NO. 2	TON	22													22
1000	4" PERFORATED PIPE	LF	1,403													1,403
1010	4" NON-PERFORATED PIPE	LF	312													312
1020	4" PERFORATED PIPE HEADWALL TYPE 1	EACH	10													10
1028	4" PERFORATED PIPE HEADWALL TYPE 3	EACH	11													11
1032	4" PERFORATED PIPE HEADWALL TYPE 4	EACH	1													1
1310	REMOVE PIPE	LF	207						32					27		266
2091	REMOVE PAVEMENT	SQ YD	6,701				78	75					191		1053	8,098
2159	TEMPORARY DITCH	LF	21,515	197	223	307	244	270	236	174	74	128	790	1770	1551	27,479
2200	ROADWAY EXCAVATION ③ ⑤	CU YD	1,025,131	8,720	2,156	22	2,398	2,975	140	1,743	84	223	5,296	3,398	12,062	1,064,348 ③ ⑤
2242	WATER ①	M GAL	849.84	8	10.42	11.62	9.23	10.67	9.37	22.77	3.25	5.28	18.85	42.4	54.63	1,056.33 ①
2351	GUARDRAIL - STEEL "W" BEAM SINGLE FACE	LF	7,762.5	75			162.5						162.5	975	337.5	9,475 ①
2360	GUARDRAIL TERMINAL SECTION NO. 1 ⑥	EACH	23	2									1		2	36 ⑥
2373	GUARDRAIL END TREATMENT TYPE 3	EACH	2													2
2391	GUARDRAIL END TREATMENT TYPE 4A	EACH	7										1	4	2	14
2429	RIGHT OF WAY MONUMENT TYPE 1	EACH	208		6			5	2	3			10	7	24	265
2432	WITNESS POST	EACH	208		6			5	2	3			10	7	24	265
2484	CHANNEL LINING CLASS III	TON	7,372						21							7,673
2545	CLEARING AND GRUBBING ②	LS														1 ②
2568	MOBILIZATION	LS														1
2569	DEMobilIZATION	LS														1
2585	EDGE KEY	LF	68.02		15.00		21.13	9.40	11.20	14.48	9.50	20.00	20.00		85.21	273.94
2650	MAINTAIN AND CONTROL TRAFFIC	LS														1
2651	DIVERSIONS (BY-PASS DETOURS)	LS														1
2671	PORTABLE CHANGEABLE MESSAGE SIGN-PORT 3 LINE	EACH														2
2701	TEMPORARY SILT FENCE	LF	21,515	197	223	307	244	270	236	174	74	128	790	1,770	1,442	27,370
2703	SILT TRAP TYPE A	EACH	183													183
2704	SILT TRAP TYPE B	EACH	264													264
2705	SILT TRAP TYPE C	EACH	61													61
2706	CLEAN SILT TRAP TYPE A	EACH	550													550
2707	CLEAN SILT TRAP TYPE B	EACH	792													792
2708	CLEAN SILT TRAP TYPE C	EACH	183													183
2709	CLEAN TEMPORARY SILT FENCE	LF	21,515	197	223	307	244	270	236	174	74	128	790	1,770	1,442	27,370
2726	STAKING	LS														1
2775	FLASHING ARROW	EACH	2													2
5990	SODDING	SQ YD	1,272				29						76			1,377
5952	TEMPORARY MULCH	SQ YD	432,212													432,212
5953	TEMPORARY SEEDING AND PROTECTION	SQ YD	43,221													43,221
5966	TOP DRESSING FERTILIZER	TON	23													23
5985	SEEDING AND PROTECTION	SQ YD	432,212													432,212
6510	PAVEMENT STRIPING - TEMPORARY PAINT - 4 IN	LF	39,640													39,640
6514	PAVEMENT STRIPING - PERMANENT PAINT - 4 IN	LF	65,331	591	669	921	732	810	708	522	222	384	2,371	2,840	4,326	80,426
6568	PAVEMENT MARKING - THERMOPLASTIC STOP BAR - 24 IN	LF	24	9	9	10	10	9	9	10	9	10	10	24		143
6570	PAVEMENT MARKING - PAINT CROSS HATCH	SQ FT	18,042													18,042
6574	PAVEMENT MARKING - THERMOPLASTIC CURVE ARROW	EACH	9													9
6576	PAVEMENT MARKING - THERMOPLASTIC "ONLY"	EACH	7													7
6589	PAVEMENT MARKER TYPE V - MW	EACH	23											8		31
6591	PAVEMENT MARKER TYPE V - BY	EACH	565											14		579
1982	DELINEATOR FOR GUARDRAIL - WHITE	EACH	83				4						4	19	3	113
22680EN	QWICK CURB	LF												819		819
2600	FABRIC-GEOTEXTILE TYPE IV FOR PIPES ④	SQ YD	4,492	80	50	157		67		67	349	74	302	275	103	6,016 ④
10020NS	FUEL ADJUSTMENT	DOLL														151,027
10030NS	ASPHALT ADJUSTMENT	DOLL														85,414
21373ND	REMOVE SIGN (BILLBOARD)	EACH												1		1
23277ENIIF	TURF MAT TYPE 4	SQ YD	438											193		631
2262	FENCE - WOVEN WIRE TYPE I	LF	435													435
1789	RECONSTRUCT MANHOLE	EACH	1													1
2397	TEMPORARY GUARDRAIL	LF														3,000
2371	GUARDRAIL END TREATMENT TYPE 7 ⑦	EACH														6 ⑦
2223	GRANULAR EMBANKMENT ⑧	CU YD														70,000 ⑧
2598	FABRIC-GEOTEXTILE TYPE III ⑨	SQ YD														105,000 ⑨

**NOTES:**

- ① FOR CONTROLLING DUST CAUSED BY MAINTAINING TRAFFIC ONLY.
- ② APPROXIMATELY 89.3 ACRES
- ③ INCLUDES 504 CU. YDS. FROM PIPE SUMMARY
- ④ FOR WRAPPING PIPE TRENCH BACK FILL
- ⑤ INCLUDES 19,622 CU. YDS. FOR EMBANKMENT BENCHING
- ⑥ INCLUDES 8 TERMINAL SECTION NO. 1 FOR TEMPORARY GUARDRAIL
- ⑦ FOR TEMPORARY GUARDRAIL
- ⑧ APPROXIMATELY 70,000 CU. YD. OF UNDERCUT EXCAVATION AND 105,000 SQ. YD. OF TYPE III GEOTEXTILE FABRIC AS PER GEOTECHNICAL NOTES 11 AND 13

EARTHWORK SUMMARY	
EXCAVATION	
EXC.	525,698
ROCK EXC.	443,300
DITCH EXC.	58,954
EMB. FOUNDATION BENCHES	19,673
TRANSVERSE BENCHES	16,219
FROM PIPE SUMMARY	504
<b>TOTAL EXCAVATION</b>	<b>1,064,348</b>
EMBANKMENT	
EMB.	243,611
EMB. FOUNDATION BENCHES	19,673
TRANSVERSE BENCHES	16,219
<b>TOTAL EMBANKMENT</b>	<b>279,503</b>

GENERAL SUMMARY

USER: \$\$\$USER\$\$\$  
 DATE: \$\$\$DATE\$\$\$  
 FILE NAME: \$\$\$designsfiles\$specifications\$\$\$  
 E-SHEET NAME: R00200SU.DGN

**BEARING & DISTANCE**

- 1 S 14° 47' 36" E - 72.26'
- 2 S 84° 05' 15" W - 26.94'
- 3 N 82° 25' 24" W - 9.19'
- 4 S 76° 30' 27" E - 190.13'
- 5 S 70° 25' 41" W - 55.48'
- 6 S 11° 31' 10" W - 20.06'
- 7 N 77° 20' 18" W - 10.00'
- 8 N 84° 00' 04" W - 100.95'
- 9 S 80° 26' 20" E - 97.36'
- 10 S 80° 26' 20" E - 97.36'
- 11 N 61° 32' 23" W - 224.63'
- 12 S 80° 26' 20" E - 101.26'
- 13 N 61° 32' 23" W - 86.22'
- 14 S 80° 26' 20" E - 173.59'
- 15 S 82° 25' 24" E - 2.59'
- 16 N 49° 12' 31" W - 40.34'
- 17 CHORD = N 67° 02' 03" W - 85.71'  
ARC DIST = 87.11'  
RADIUS = 140.00'
- 18 S 82° 25' 24" E - 56.50'  
CHORD = S 84° 59' 05" E - 47.37'  
ARC DIST = 47.38'  
RADIUS = 530.00'
- 19 CHORD = N 84° 59' 47" E - 137.58'  
ARC DIST = 137.97'  
RADIUS = 530.00'
- 20 N 77° 32' 19" E - 64.38'
- 21 CHORD = N 77° 31' 29" E - 0.49'  
ARC DIST = 0.49'  
RADIUS = 1030.00'
- 22 S 51° 08' 50" E - 46.11'
- 23 N 87° 09' 47" E - 29.39'
- 24 N 69° 26' 22" W - 59.27'
- 25 N 66° 39' 31" E - 40.69'
- 26 S 76° 30' 27" E - 17.03'
- 27 S 84° 05' 15" W - 15.18'
- 28 N 14° 47' 41" W - 77.98'
- 29 N 69° 26' 22" W - 138.46'
- 30 S 2° 50' 13" E - 42.35'
- 31 S 68° 04' 55" W - 57.55'
- 32 S 16° 58' 13" E - 107.53'
- 33 S 76° 30' 27" E - 103.15'
- 34 N 80° 26' 20" W - 56.68'
- 35 N 80° 26' 20" W - 69.32'

PREPARED BY \_\_\_\_\_ DATE \_\_\_\_\_  
 CHECKED BY \_\_\_\_\_ DATE \_\_\_\_\_  
 APPROVED BY \_\_\_\_\_ DATE \_\_\_\_\_

**PROPERTY OWNER**

**JOE BRANDON PIGG AND DAWN PIGG (WF.)**  
 D.B. 200, P. 778  
 D.B. 296, P. 637

**KARA PRICHARD AND CHRIS PRICHARD (HUS.)**  
 D.B. 296, P. 139

**RENEE HOWARD**  
 D.B. 309, P. 16

**TERESA J PIGG**  
 D.B. 296, P. 595

**JORDAN ZACHARY PIGG**  
 D.B. 296, P. 577

**JIM CYRUS**  
 D.B. 237, P. 672

**RUTH Y. COLVIN & EUGENE R. COLVIN (HUS.)**  
 D.B. 188, P. 538

**MATTHEW S. SHANNON**  
 D.B. 271, P. 689

**PATTY F. WALLACE**  
 D.B. 179, P. 491

**BARBARA K. WALLIS, d/b/a WALLIS SPEECH PATHOLOGY SERVICES**  
 D.B. 211, P. 262

**WILLIAM R. WALLIS & BARBARA K. WALLIS (WF.)**  
 D.B. 284, P. 679

**RICHARD L. MUNCEY (DECEASED) BESSIE F. MUNCEY**  
 D.B. 213, P. 440

COUNTY OF	ITEM NO.	SHEET NO.
LAWRENCE	12-284.00	R31

STA. TO STA.	SIZE/TYPE	CHANNEL LINING		
		TYPE	DEPTH	THICK QUANTITY
220+05.14-220+33.54	"V"	SOD	1	14 SY

STA. 216+57.63 TO STA. 219+57.63  
 CONST. 50:1 PAVEMENT TAPER

STA. 219+57.63 TO STA. 221+37.63  
 CONST. 15:1 BAY TAPER

STA. 221+37.63 TO STA. 223+37.63  
 CONST. 12' STORAGE LANE

**CURVE DATA**  
 PI Sta. 220+14.86  
 D= 29° 48' 06" L.T.  
 T=206.22'  
 L=403.11'  
 R=775.00'  
 E=26.97'  
 e=8.00%  
 Runoff=204'  
 Runout=51'

STA. 44+03.65 RAMP TO KY 32  
 EQUAL STA. 1272+00.00 U.S. ROUTE 23

END CONSTRUCTION  
 STATION 49+82.00

STA. 50+00.00 RAMP TO KY 32  
 EQUAL STA. 228+52.56 KY 32

STATION 229+47.91  
 KY 32 END  
 RIGHT OF WAY

**PROPERTY OWNERS**  
**JOHN W. PIGG ETAL**  
 D.B. 119, P. 124

**JOHN LEMASTER & BONNIE LEMASTER (WF)**  
 D.B. 191, P. 338

STA. 223+50.00 CONST. 45.04' OF EDGE KEY

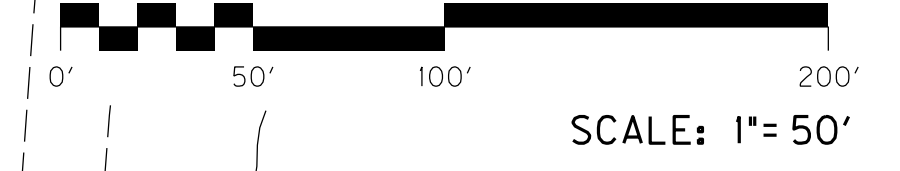
**BEARING & DISTANCE**

- 36 S 61° 56' 22" W - 60.00'
- 37 N 27° 25' 32" W - 122.67'
- 38 S 28° 03' 38" E - 135.00'
- 39 S 61° 56' 22" W - 60.00'
- 40 N 28° 03' 38" W - 135.00'
- 41 S 28° 03' 38" E - 35.14'
- 42 S 0° 24' 02" E - 97.66'
- 43 S 71° 08' 13" W - 14.86'
- 44 N 28° 03' 38" W - 119.27'
- 45 S 28° 03' 38" E - 254.27'
- 46 S 71° 01' 16" W - 21.64'
- 47 S 77° 16' 17" W - 98.00'
- 48 N 46° 24' 33" W - 116.98'
- 49 N 2° 18' 57" W - 125.00'
- 50 N 18° 14' 40" E - 119.62'
- 51 N 28° 03' 38" W - 68.63'
- 52 N 75° 48' 05" E - 14.97'
- 53 S 14° 11' 53" E - 145.02'
- 54 S 75° 48' 05" W - 14.97'
- 55 S 14° 11' 55" E - 145.02'
- 56 N 76° 49' 09" W - 50.45'
- 57 N 7° 09' 31" W - 127.08'
- 58 N 84° 11' 05" E - 29.54'

STATION	TYPE	WIDTH	PIPE		QUANTITY
			LENGTH	SIZE	
RT. ENT. LT. 217+08	CONCRETE	12'	28'	18"	52 SQ. YD.
RT. 218+79.50	ASPHALT	12'	34'	30"	203 SQ. YD.
LT. 219+32	ASPHALT	32'	45'	18"	345 SQ. YD.
RT. ENT. LT. 219+32	ASPHALT	21'	40'	18"	170 SQ. YD.
ENT. 413.96' LT. STA. 217+08 TO 264.56' LT. STA. 217+08	ASPHALT	10'	28'	18"	171 SQ. YD.

**CURVE DATA**  
 PI Sta. 231+45.29  
 D= 18° 15' 00" R.T.  
 T=368.12'  
 L=730.00'  
 R=2291.83'  
 E=29.38'  
 e=5.30%  
 Runoff=140'  
 Runout=53'

STA. TO STA.	SIZE/TYPE	CHANNEL LINING		
		TYPE	DEPTH	THICK QUANTITY
219+00.00-219+84.90	"V"	CLASS III	1	2 42 TON
219+84.90-220+00.00	"V"	CLASS III	1	2 8 TON



**PLAN SHEET**  
 STA. 215+00.00 TO STA. 230+00.00

USER: \$\$\$USER\$\$\$  
 DATE: \$\$\$DATE\$\$\$  
 FILE NAME: \$\$\$designsfiles\$\$\$specifications\$\$\$  
 E-SHEET NAME: R03100PL-DGN

**REVISED 12-10-2012**  
 MILTON MARCUM  
 D.B. 145, P. 267  
 S 1°01'03"E - 83.81'

STA. TO STA.	SIZE/TYPE	CHANNEL LINING		
		TYPE	DEPTH THICK	QUANTITY
220+05.14-220+33.54	"V"	SOD	1	14 SY

STA. 216+57.63 TO STA. 219+57.63  
 CONST. 50:1 PAVEMENT TAPER

STA. 219+57.63 TO STA. 221+37.63  
 CONST. 15:1 BAY TAPER

STA. 221+37.63 TO STA. 223+37.63  
 CONST. 12" STORAGE LANE

**CURVE DATA**  
 PI Sta. 220+14.86  
 D= 29° 48' 06" L.T.  
 T=206.22'  
 L=403.11'  
 R=775.00'  
 e=26.97'  
 e=8.00%  
 Runoff=204'  
 Runout=51'

STA. 44+03.65 RAMP TO KY 32  
 EQUAL STA. 1272+00.00 U.S. ROUTE 23

END CONSTRUCTION  
 STATION 49+82.00

STA. 224+88.94 TO STA. 227+77.17  
 CONST. 12" STORAGE LANE

STA. 229+50.00 TO STA. 230+00.00  
 CONST. 50:1 PAVEMENT TAPER

STA. 50+00.00 RAMP TO KY 32  
 EQUAL STA. 228+52.56 KY 32

STATION 229+47.91  
 KY 32 END  
 RIGHT OF WAY

**PROPERTY OWNERS**  
 JOHN W. PIGG ETAL  
 D.B. 119, P. 124

JOHN LEMASTER &  
 BONNIE LEMASTER (WF)  
 D.B. 191, P. 338

STA. 223+50.00 CONST. 45.04' OF EDGE KEY

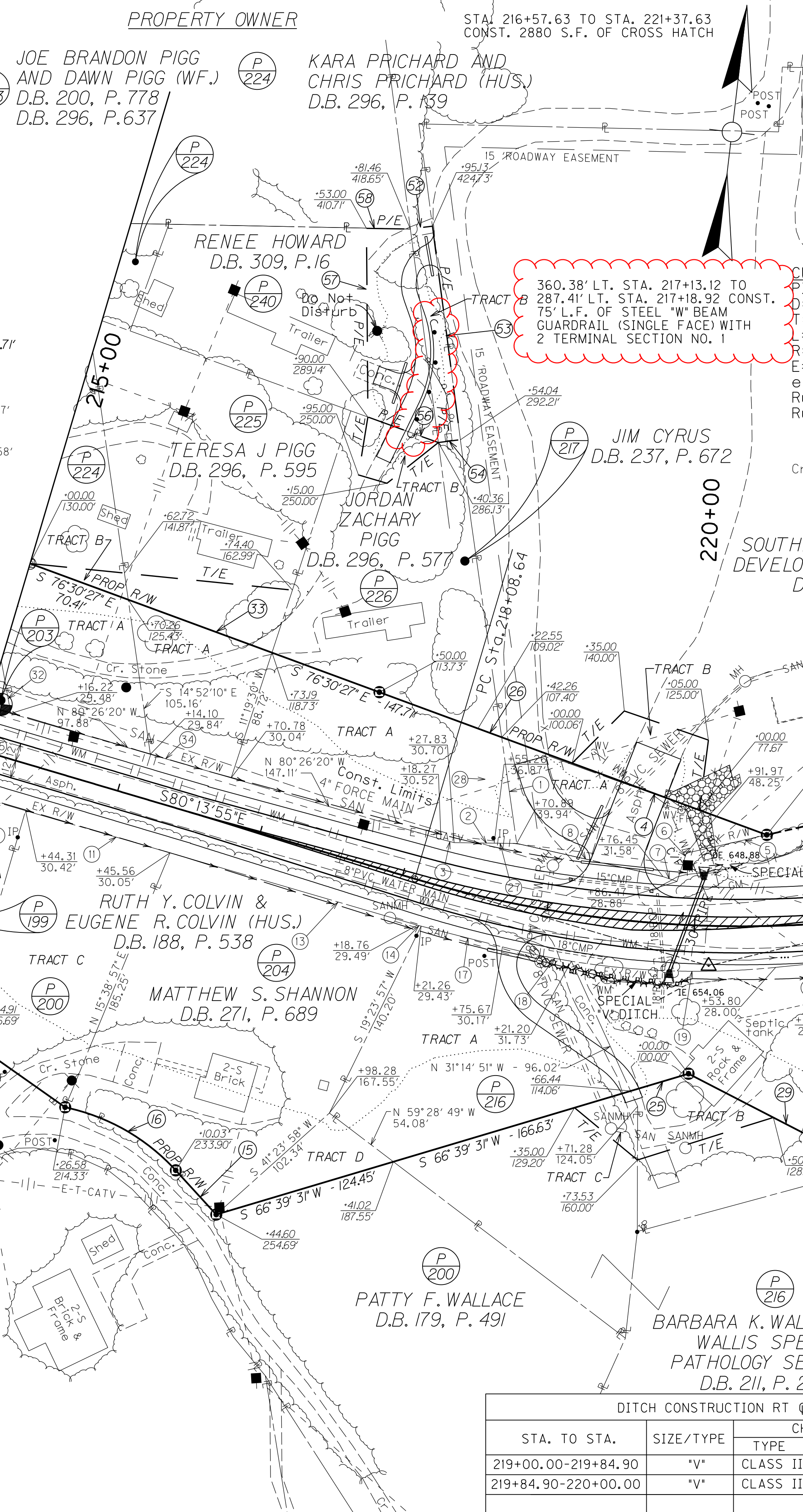
STATION	TYPE	WIDTH	PIPE		QUANTITY
			LENGTH	SIZE	
RT. ENT. LT. 217+08	CONCRETE	12'	28'	18"	52 SQ. YD.
RT. 218+79.50	ASPHALT	12'	34'	30"	203 SQ. YD.
LT. 219+32	ASPHALT	32'	45'	18"	345 SQ. YD.
RT. ENT. LT. 219+32	ASPHALT	21'	40'	18"	170 SQ. YD.
ENT. 413.96' LT. STA. 217+08 TO 264.56' LT. STA. 217+08	ASPHALT	10'	28'	18"	171 SQ. YD.

- BEARING & DISTANCE**
- 36 S 61°56'22" W - 60.00'
  - 37 N 27°25'32" W - 122.67'
  - 38 S 28°03'38" E - 135.00'
  - 39 S 61°56'22" W - 60.00'
  - 40 N 28°03'38" W - 135.00'
  - 41 S 28°03'38" E - 351.4'
  - 42 S 0°24'02" E - 97.66'
  - 43 S 71°08'13" W - 14.86'
  - 44 N 28°03'38" W - 119.27'
  - 45 S 28°03'38" E - 254.27'
  - 46 S 71°01'16" W - 21.64'
  - 47 S 77°16'17" W - 98.00'
  - 48 N 46°24'33" W - 116.98'
  - 49 N 2°18'57" W - 125.00'
  - 50 N 18°14'40" E - 119.62'
  - 51 N 28°03'38" W - 68.63'
  - 52 N 75°48'05" E - 149.7'
  - 53 S 14°11'53" E - 145.02'
  - 54 S 75°48'05" W - 149.7'
  - 55 S 14°11'55" E - 145.02'
  - 56 N 76°49'09" W - 50.45'
  - 57 N 7°09'31" W - 127.08'
  - 58 N 84°11'05" E - 29.54'

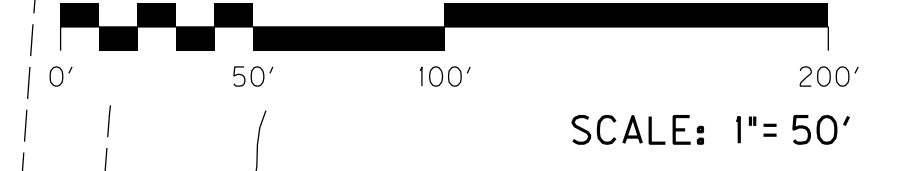
**CURVE DATA**  
 PI Sta. 231+45.29  
 D= 18°15'00" RT.  
 T=368.12'  
 L=730.00'  
 R=2291.83'  
 E=29.38'  
 e=5.30%  
 Runoff=140'  
 Runout=53'

STA. TO STA.	SIZE/TYPE	CHANNEL LINING		
		TYPE	DEPTH THICK	QUANTITY
219+00.00-219+84.90	"V"	CLASS III	1 2	42 TON
219+84.90-220+00.00	"V"	CLASS III	1 2	8 TON

- BEARING & DISTANCE**
- 1 S 14°47'36" E - 72.26'
  - 2 S 84°05'15" W - 26.94'
  - 3 N 82°25'24" W - 9.19'
  - 4 S 76°30'27" E - 190.13'
  - 5 S 70°25'41" W - 55.48'
  - 6 S 11°31'10" W - 20.06'
  - 7 N 77°20'18" W - 10.00'
  - 8 N 84°00'04" W - 100.95'
  - 9 S 80°26'20" E - 97.36'
  - 10 S 80°26'20" E - 97.36'
  - 11 N 61°32'23" W - 224.63'
  - 12 S 80°26'20" E - 101.26'
  - 13 N 61°32'23" W - 86.22'
  - 14 S 80°26'20" E - 173.59'
  - 15 S 82°25'24" E - 2.59'
  - 16 N 49°12'31" W - 40.34'
  - 17 S 82°25'24" E - 56.50'
  - 18 CHORD = S 84°59'05" E - 47.37'  
ARC DIST = 47.38'  
RADIUS = 530.00'
  - 19 CHORD = N 84°59'47" E - 137.58'  
ARC DIST = 137.97'  
RADIUS = 530.00'
  - 20 N 77°32'19" E - 64.38'
  - 21 CHORD = N 77°31'29" E - 0.49'  
ARC DIST = 0.49'  
RADIUS = 1030.00'
  - 22 S 51°08'50" E - 46.11'
  - 23 N 87°09'47" E - 29.39'
  - 24 N 69°26'22" W - 59.27'
  - 25 N 66°39'31" E - 40.69'
  - 26 S 76°30'27" E - 17.03'
  - 27 S 84°05'15" W - 15.18'
  - 28 N 14°47'41" W - 77.98'
  - 29 N 69°26'22" W - 138.46'
  - 30 S 2°50'13" E - 42.35'
  - 31 S 68°04'55" W - 57.55'
  - 32 S 16°58'13" E - 107.53'
  - 33 S 76°30'27" E - 103.15'
  - 34 N 80°26'20" W - 56.68'
  - 35 N 80°26'20" W - 69.32'



USER: \$\$\$USER\$\$\$  
 DATE: \$\$\$DATE\$\$\$  
 FILE NAME: \$\$\$designsfiles\$\$\$specifications\$\$\$  
 E-SHEET NAME: R03100PL-DGN



PLAN SHEET  
 STA. 215+00.00 TO STA. 230+00.00





**PROPOSAL BID ITEMS**

Report Date 12/10/12

**Section: 0001 - PAVING**

LINE	BID CODE	ALT	DESCRIPTION	QUANTITY	UNIT	UNIT PRICE	FP	AMOUNT
0010	00003		CRUSHED STONE BASE	60,299.00	TON		\$	
0020	00100		ASPHALT SEAL AGGREGATE	280.00	TON		\$	
0030	00103		ASPHALT SEAL COAT	35.00	TON		\$	
0040	00212		CL2 ASPH BASE 1.00D PG64-22	52,158.00	TON		\$	
0050	00301		CL2 ASPH SURF 0.38D PG64-22	9,075.00	TON		\$	
0060	02084		JPC PAVEMENT-8 IN	855.00	SQYD		\$	

**Section: 0002 - ROADWAY**

LINE	BID CODE	ALT	DESCRIPTION	QUANTITY	UNIT	UNIT PRICE	FP	AMOUNT
0070	00078		CRUSHED AGGREGATE SIZE NO 2	22.00	TON		\$	
0080	01000		PERFORATED PIPE-4 IN	1,403.00	LF		\$	
0090	01010		NON-PERFORATED PIPE-4 IN	312.00	LF		\$	
0100	01020		PERF PIPE HEADWALL TY 1-4 IN	10.00	EACH		\$	
0110	01028		PERF PIPE HEADWALL TY 3-4 IN	11.00	EACH		\$	
0120	01032		PERF PIPE HEADWALL TY 4-4 IN	1.00	EACH		\$	
0130	01310		REMOVE PIPE	266.00	LF		\$	
0140	01789		RECONSTRUCT MANHOLE	1.00	EACH		\$	
0150	01982		DELINEATOR FOR GUARDRAIL MONO DIRECTIONAL WHITE	113.00	EACH		\$	
0160	02091		REMOVE PAVEMENT	8,098.00	SQYD		\$	
0170	02159		TEMP DITCH	27,479.00	LF		\$	
0180	02200		ROADWAY EXCAVATION	1,064,348.00	CUYD		\$	
0181	02223		GRANULAR EMBANKMENT(ADDED: 12-10-12)	70,000.00	CUYD		\$	
0190	02242		WATER	1,056.33	MGAL		\$	
0200	02262		FENCE-WOVEN WIRE TYPE 1	435.00	LF		\$	
0210	02351		GUARDRAIL-STEEL W BEAM-S FACE (REVISED: 12-10-12)	9,475.00	LF		\$	
0220	02360		GUARDRAIL TERMINAL SECTION NO 1 (REVISED: 12-10-12)	36.00	EACH		\$	
0221	02371		GUARDRAIL END TREATMENT TYPE 7 (ADDED: 12-10-12)	6.00	EACH		\$	
0230	02373		GUARDRAIL END TREATMENT TYPE 3	2.00	EACH		\$	
0240	02391		GUARDRAIL END TREATMENT TYPE 4A	14.00	EACH		\$	
0241	02397		TEMP GUARDRAIL(ADDED: 12-10-12)	3,000.00	LF		\$	
0250	02429		RIGHT-OF-WAY MONUMENT TYPE 1	265.00	EACH		\$	
0260	02432		WITNESS POST	265.00	EACH		\$	
0270	02484		CHANNEL LINING CLASS III	7,673.00	TON		\$	
0280	02545		CLEARING AND GRUBBING(89.3 ACRES)	1.00	LS		\$	
0290	02585		EDGE KEY	273.94	LF		\$	
0291	02598		FABRIC-GEOTEXTILE TYPE III(ADDED: 12-10-12)	105,000.00	SQYD		\$	
0300	02600		FABRIC GEOTEXTILE TY IV FOR PIPE	6,016.00	SQYD	\$2.00	\$	\$12,032.00
0310	02650		MAINTAIN & CONTROL TRAFFIC	1.00	LS		\$	
0320	02651		DIVERSIONS (BY-PASS DETOURS)	1.00	LS		\$	
0330	02671		PORTABLE CHANGEABLE MESSAGE SIGN	2.00	EACH		\$	
0340	02701		TEMP SILT FENCE	27,370.00	LF		\$	



121356

**PROPOSAL BID ITEMS**

Page 2 of 4

Report Date 12/10/12

LINE	BID CODE	ALT	DESCRIPTION	QUANTITY	UNIT	UNIT PRICE	FP	AMOUNT
0350	02703		SILT TRAP TYPE A	183.00	EACH		\$	
0360	02704		SILT TRAP TYPE B	264.00	EACH		\$	
0370	02705		SILT TRAP TYPE C	61.00	EACH		\$	
0380	02706		CLEAN SILT TRAP TYPE A	550.00	EACH		\$	
0390	02707		CLEAN SILT TRAP TYPE B	792.00	EACH		\$	
0400	02708		CLEAN SILT TRAP TYPE C	183.00	EACH		\$	
0410	02709		CLEAN TEMP SILT FENCE	27,370.00	LF		\$	
0420	02726		STAKING	1.00	LS		\$	
0430	02775		ARROW PANEL	2.00	EACH		\$	
0440	05952		TEMP MULCH	432,212.00	SQYD		\$	
0450	05953		TEMP SEEDING AND PROTECTION	43,221.00	SQYD		\$	
0460	05966		TOPDRESSING FERTILIZER	23.00	TON		\$	
0470	05985		SEEDING AND PROTECTION	432,212.00	SQYD		\$	
0480	05990		SODDING	1,377.00	SQYD		\$	
0490	06510		PAVE STRIPING-TEMP PAINT-4 IN	39,640.00	LF		\$	
0500	06514		PAVE STRIPING-PERM PAINT-4 IN	80,426.00	LF		\$	
0510	06568		PAVE MARKING-THERMO STOP BAR-24IN	143.00	LF		\$	
0520	06570		PAVE MARKING-PAINT CROSS-HATCH	18,042.00	SQFT		\$	
0530	06574		PAVE MARKING-THERMO CURV ARROW	9.00	EACH		\$	
0540	06576		PAVE MARKING-THERMO ONLY	7.00	EACH		\$	
0550	06589		PAVEMENT MARKER TYPE V-MW	31.00	EACH		\$	
0560	06591		PAVEMENT MARKER TYPE V-BY	579.00	EACH		\$	
0570	10020NS		FUEL ADJUSTMENT	151,027.00	DOLL	\$1.00	\$	\$151,027.00
0580	10030NS		ASPHALT ADJUSTMENT	85,414.00	DOLL	\$1.00	\$	\$85,414.00
0590	21373ND		REMOVE SIGN	1.00	EACH		\$	
0600	22680EN		QWICK CURB MEDIAN SEPARATOR	819.00	LF		\$	
0610	23277EN11F		TURF REINFORCEMENT MAT 4	631.00	SQYD		\$	

**PROPOSAL BID ITEMS**

Report Date 12/10/12

**Section: 0003 - DRAINAGE**

LINE	BID CODE	ALT	DESCRIPTION	QUANTITY	UNIT	UNIT PRICE	FP	AMOUNT
0620	00441		ENTRANCE PIPE-18 IN	1,825.00	LF		\$	
0630	00443		ENTRANCE PIPE-24 IN	316.00	LF		\$	
0640	00445		ENTRANCE PIPE-30 IN	158.00	LF		\$	
0650	00462		CULVERT PIPE-18 IN	1,040.00	LF		\$	
0660	00464		CULVERT PIPE-24 IN	781.00	LF		\$	
0670	00466		CULVERT PIPE-30 IN	460.00	LF		\$	
0680	00468		CULVERT PIPE-36 IN	367.00	LF		\$	
0690	00470		CULVERT PIPE-48 IN	332.00	LF		\$	
0700	00472		CULVERT PIPE-60 IN	135.00	LF		\$	
0710	00474		CULVERT PIPE-72 IN	47.00	LF		\$	
0720	00475		CULVERT PIPE-78 IN	11.00	LF		\$	
0730	01450		S & F BOX INLET-OUTLET-18 IN	19.00	EACH		\$	
0740	01451		S & F BOX INLET-OUTLET-24 IN	13.00	EACH		\$	
0750	01452		S & F BOX INLET-OUTLET-30 IN	12.00	EACH		\$	
0760	01453		S & F BOX INLET-OUTLET-36 IN	3.00	EACH		\$	
0770	01490		DROP BOX INLET TYPE 1	5.00	EACH		\$	
0780	01538		DROP BOX INLET TYPE 7	4.00	EACH		\$	
0790	01544		DROP BOX INLET TYPE 11	2.00	EACH		\$	
0800	08100		CONCRETE-CLASS A	122.02	CUYD		\$	
0810	08150		STEEL REINFORCEMENT	9,237.00	LB		\$	
0820	20694EN		ALUMINUM STRUCTURAL PLATE BOX CULVERT	49.00	LF		\$	
0830	23131ER701		PIPELINE VIDEO INSPECTION	4,823.50	LF		\$	

**Section: 0004 - BRIDGE**

LINE	BID CODE	ALT	DESCRIPTION	QUANTITY	UNIT	UNIT PRICE	FP	AMOUNT
0860	08002		STRUCTURE EXCAV-SOLID ROCK	63.70	CUYD		\$	
0870	08003		FOUNDATION PREPARATION(26329)	1.00	LS		\$	
0880	08003		FOUNDATION PREPARATION(26330)	1.00	LS		\$	
0890	08003		FOUNDATION PREPARATION(26331)	1.00	LS		\$	
0900	08003		FOUNDATION PREPARATION(26332)	1.00	LS		\$	
0910	08003		FOUNDATION PREPARATION(26333)	1.00	LS		\$	
0920	08003		FOUNDATION PREPARATION(26335)	1.00	LS		\$	
0930	08003		FOUNDATION PREPARATION(26336)	1.00	LS		\$	
0940	08003		FOUNDATION PREPARATION(26337)	1.00	LS		\$	
0950	08003		FOUNDATION PREPARATION(26338)	1.00	LS		\$	
0960	08100		CONCRETE-CLASS A	1,033.90	CUYD		\$	
0970	08150		STEEL REINFORCEMENT	86,751.00	LB		\$	

**PROPOSAL BID ITEMS**

Report Date 12/10/12

**Section: 0005 - LIGHTING**

LINE	BID CODE	ALT	DESCRIPTION	QUANTITY	UNIT	UNIT PRICE	FP	AMOUNT
0980	04700		POLE 30 FT MTG HT	3.00	EACH		\$	
0990	04701		POLE 40 FT MTG HT	12.00	EACH		\$	
1000	04723		BRACKET 10 FT	3.00	EACH		\$	
1010	04724		BRACKET 12 FT	6.00	EACH		\$	
1020	04725		BRACKET 15 FT	6.00	EACH		\$	
1030	04740		POLE BASE	15.00	EACH		\$	
1040	04750		TRANSFORMER BASE	15.00	EACH		\$	
1050	04760		POLE W/SECONDARY CONTROL EQUIP	2.00	EACH		\$	
1060	04770		HPS LUMINAIRE	15.00	EACH		\$	
1070	04780		FUSED CONNECTOR KIT	30.00	EACH		\$	
1080	04793		CONDUIT-1 1/4 IN	2,300.00	LF		\$	
1090	04795		CONDUIT-2 IN	360.00	LF		\$	
1100	04820		TRENCHING AND BACKFILLING	2,300.00	LF		\$	
1110	20391NS835		ELECTRICAL JUNCTION BOX TYPE A	8.00	EACH		\$	
1120	21543EN		BORE AND JACK CONDUIT	360.00	LF		\$	
1130	23675EC		WIRE-NO. 12-INSTALL	2,450.00	LF		\$	
1140	24474ED		WIRE-NO.8-INSTALL	8,625.00	LF		\$	

**Section: 0006 - TRAINEES**

LINE	BID CODE	ALT	DESCRIPTION	QUANTITY	UNIT	UNIT PRICE	FP	AMOUNT
1150	02742		TRAINEE PAYMENT REIMBURSEMENT1 CLASS B OPERATOR	1,400.00	HOUR		\$	

**Section: 0007 - MOBILIZATION / DEMOBILIZATION**

LINE	BID CODE	ALT	DESCRIPTION	QUANTITY	UNIT	UNIT PRICE	FP	AMOUNT
0840	02568		MOBILIZATION	1.00	LS		\$	
0850	02569		DEMOBILIZATION	1.00	LS		\$	